



Expand your Esi-Link options — with the ESI IP Gateway.

You don't have to forego connecting your branch offices with Esi-Link just because you have someone else's phone system. With the **ESI IP Gateway**, you can extend the significant benefits of Esi-Link to **any** phone system.

Esi-Link is how ESI connects phone systems together. A remarkably advanced, powerful means of communication that uses VoIP (voice over Internet Protocol), Esi-Link intelligently combines all of your locations so that they operate as a single, productivity-boosting system. The inability to connect a non-ESI system has, until now, limited you from extending that power. With the ESI IP Gateway, you can connect any system of any size, big or small — and from any other manufacturer — to your Esi-Link network.



The advantage of Esi-Link

Esi-Link does more than just connect multiple ESI systems together; it extends communication well beyond that of traditional networking. Every Esi-Link-based network provides the highest level of communication intelligence between your different locations. The ESI systems constantly share information with each other; so, beyond just making IP phone calls, each individual system also manages call processing. For example, calls are routinely transferred between Esi-Link locations with location information attached, and messages are moved with only a few simple keystrokes. The result is unparalleled access to those locations' most desirable features.

Break the VoIP language barrier

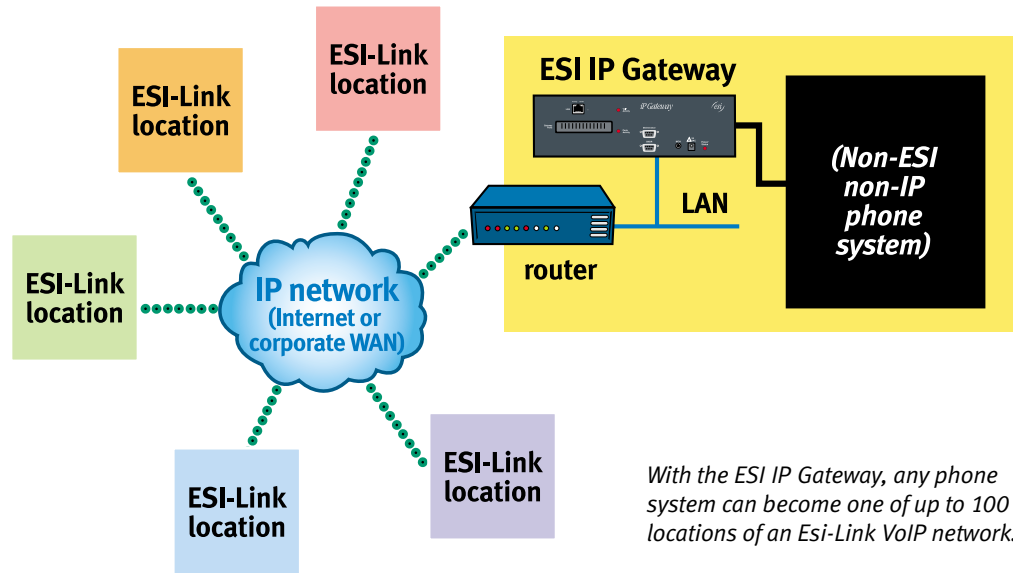
The concept behind the ESI IP Gateway is quite simple. Think of it as a translator. The ESI IP Gateway takes anyone else's system that isn't VoIP-enabled (and therefore is unable to speak to ESI systems) and translates that system's calls into Esi-Link calls. Every system now speaks the same language, resulting in a superior level of intelligent communication.



IP Gateway

Start easy or start strong

You can use the ESI IP Gateway to connect anyone's PBX to any one of 99 other locations on your Esi-Link network (see diagram, *below*). Adding older systems to that network can be accomplished as easily or as aggressively as your individual needs require. As your business communications needs grow and your offices need the superior features of ESI phone systems, you can smoothly add them to the mix.



Powerful connectivity

Every ESI IP Gateway comes equipped with 12 available channels. Making a call over the Esi-Link VoIP network is as easy as selecting an outside line. Someone at another location on the Esi-Link network can intercom you with the press of a single key. With the power of Esi-Link, the ESI IP Gateway's 12 channels are used more intelligently. Based on the capabilities of the PBX* attached to the ESI IP Gateway, you can customize the integration to suit any number of specific applications. You can call any PBX station from any Esi-Link-enabled ESI system. Or you can route calls from the ESI system directly to departments within the PBX. That's power you can use.

The ESI IP Gateway is just one member of the line of innovative business communications products from ESI. To learn more, consult your ESI Reseller or visit our Web site.



www.esiip.com

* The non-ESI PBX must support certain features to take full advantage of the ESI IP Gateway. Always check with your Certified ESI Reseller to determine whether the non-ESI PBX supports your particular application requirements. ESI cannot warrant the performance of, and is not responsible for, non-ESI PBXs' feature capabilities.

Product specifications subject to change without notice.
Copyright © 2002 ESI (Estech Systems, Inc.).



ESI products are proudly created in the U.S.A.